



Young Adult Survey Results





Why survey young adults?

- Track current trends of health behavior
- Monitor impact of COVID on young adults
- Inform policies that impact young adults
- Guide decision-making for expenditures
- Prioritize and mobilize resources





How has data been used in the past?

- To understand and track health behaviors and trends (like cigarette smoking or alcohol use)
- To identify new or emerging health concerns (like vaping/e-cigarettes)
- To measure the impact of programs and policies (Tobacco 21 legislation)





Recruiting young adults for a survey

- For data to be valid, it needs to be representative
- Previous efforts included random-digit dialing landlines
- Necessary to use new methods
- Two main efforts in this phase:
 - Facebook/Instagram ads
 - Peer-to-peer text campaign



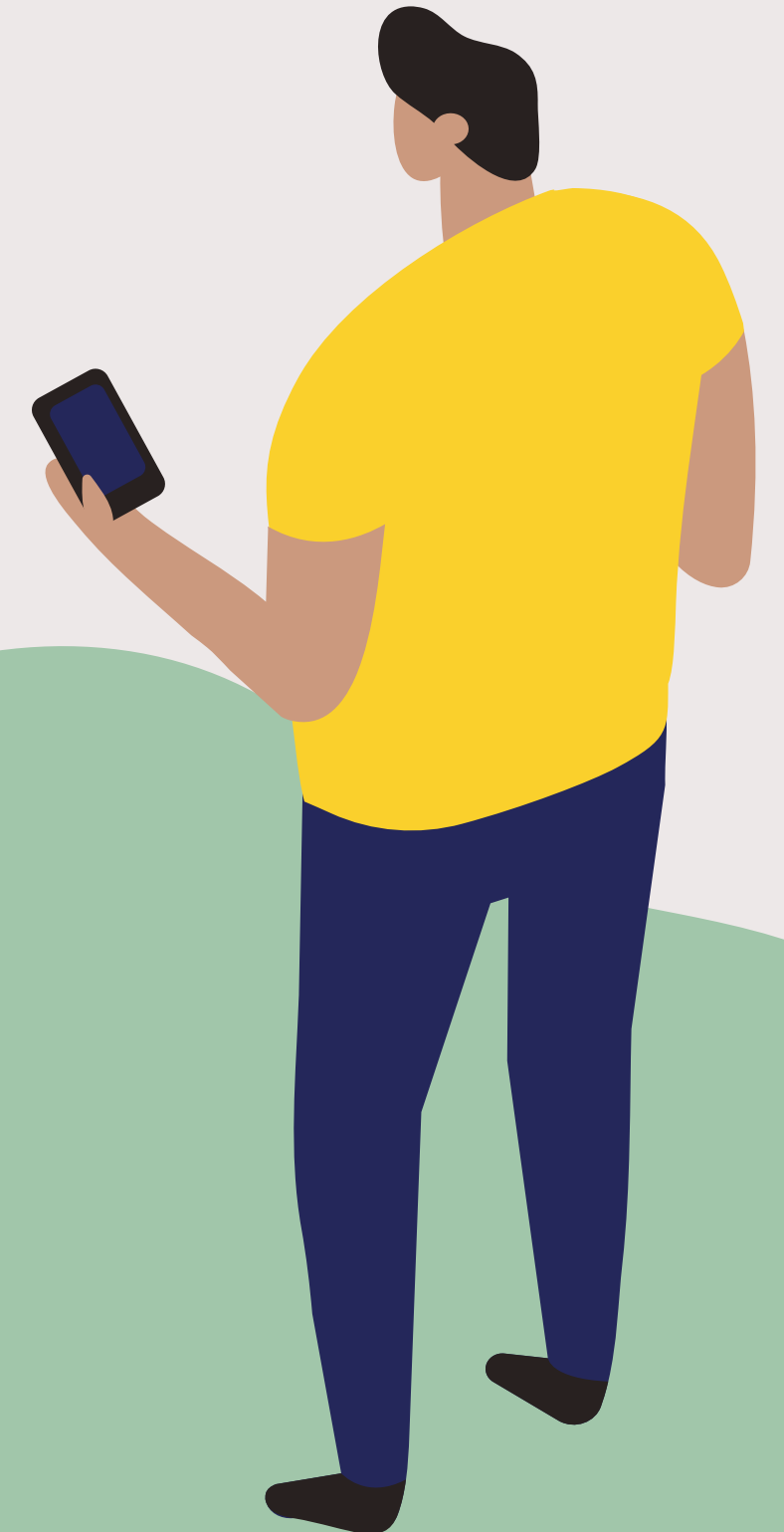
The logo features the text "Zoom Poll" in a bold, white, sans-serif font, centered within a large, irregular orange shape that resembles a speech bubble or a drop. The background is a solid, light gray color.

Zoom Poll



Recruiting young adults for a survey

- Zoom poll results
- Facebook/Instagram ads
 - Did the social media ads catch your attention the first time?
- Peer-to-peer text campaign
 - What helped you trust the text(s) you received?
 - What do you think would increase the legitimacy of a text campaign?





Impact of COVID on education/work

COVID impacted young adults in three main ways:

1

Difficulty in keeping up with work/school (43%)

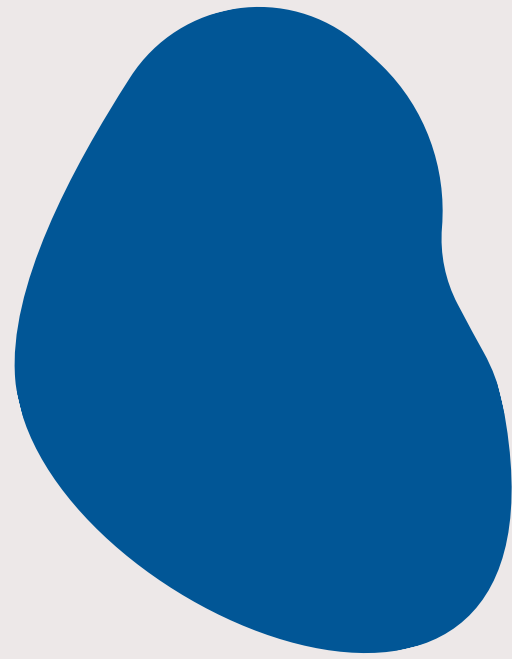
2

Delayed going to school/training/college (29%)

3

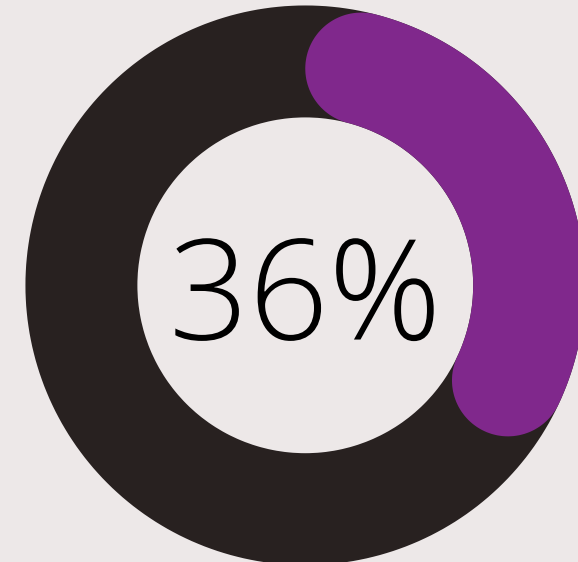
Hours at work were reduced (28%)



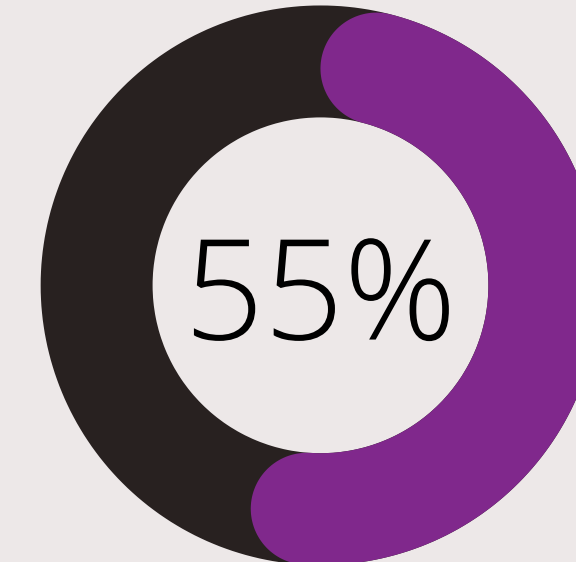


Impact of COVID on education/work

AGES 18 - 20

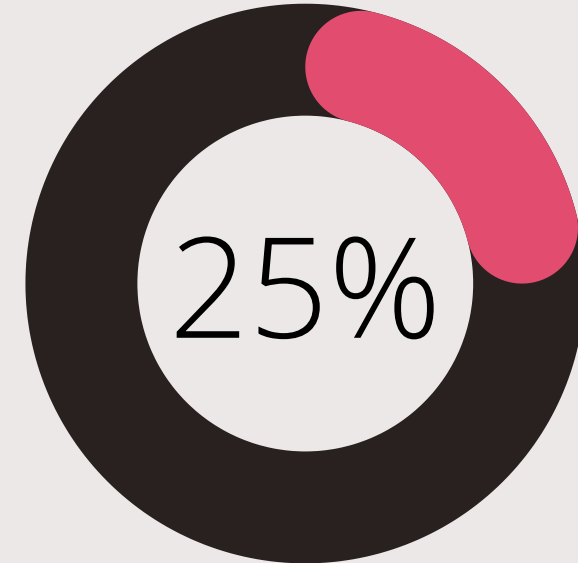


Delaying school/training

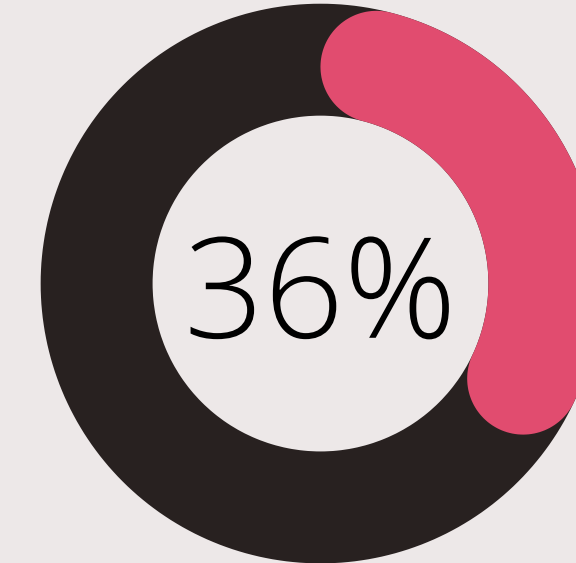


Difficulty in school/work

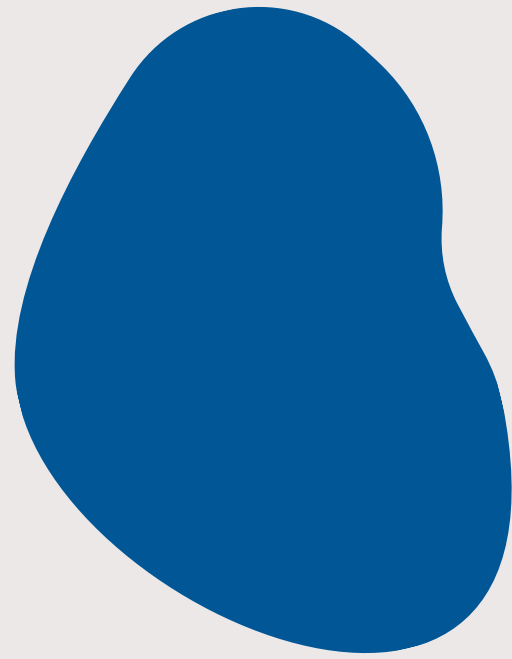
AGES 21 - 25



Delaying school/training

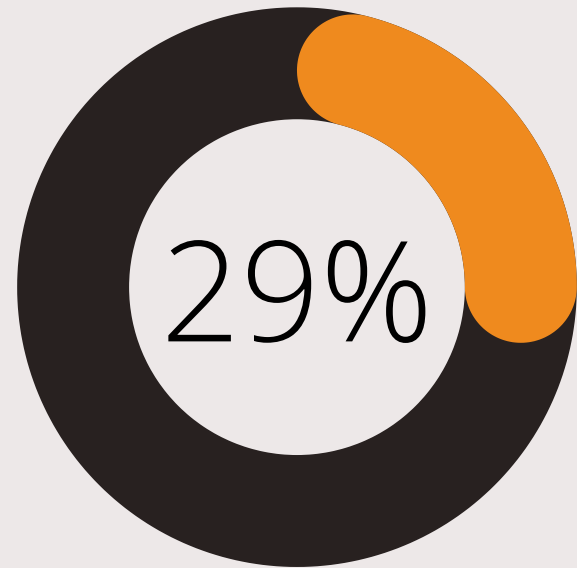


Difficulty in school/work



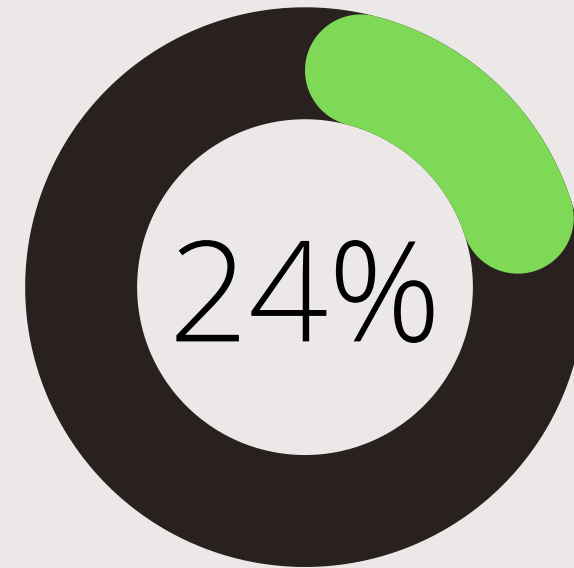
Impact of COVID on education/work

Male



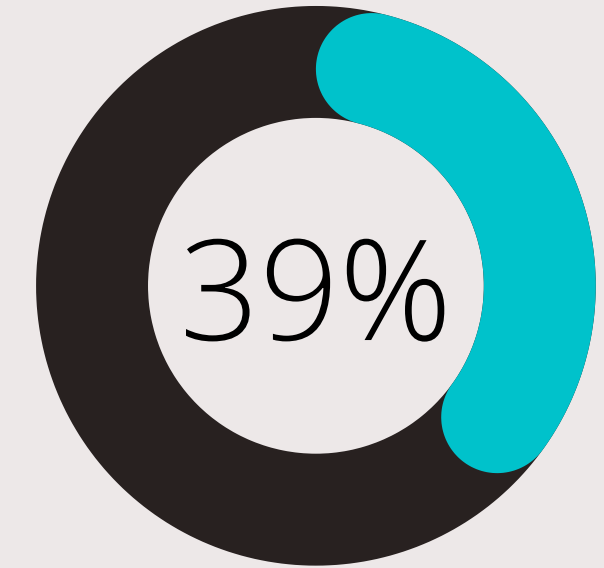
Delaying
school/training

Female

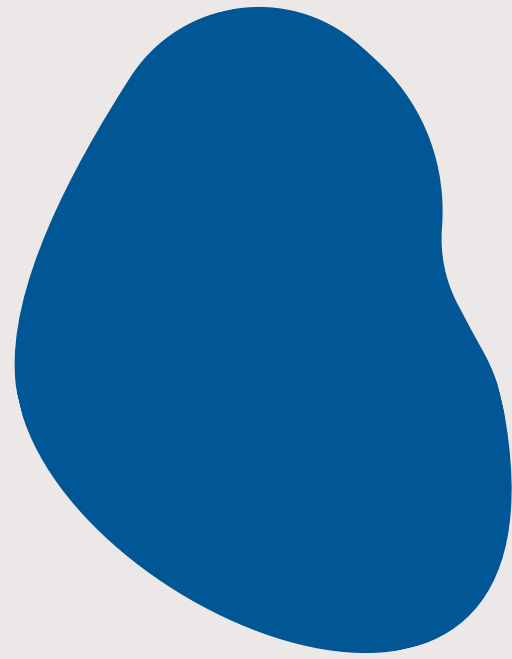


Delaying
school/training

Non-Binary

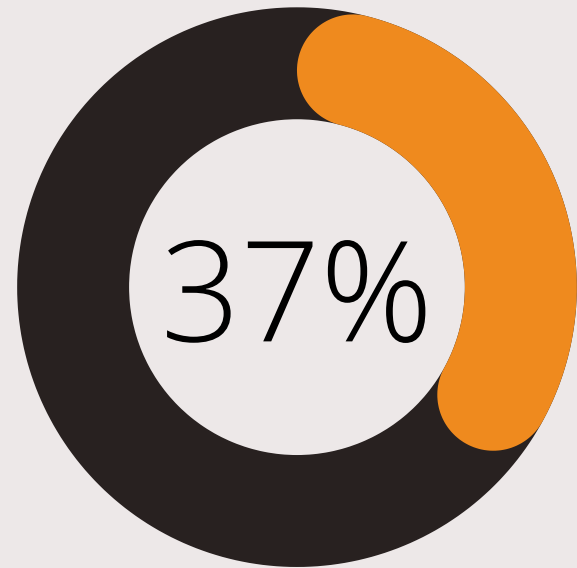


Delaying
school/training



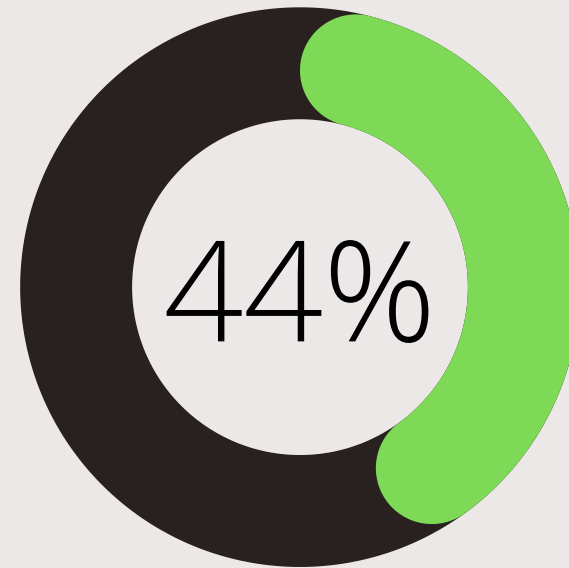
Impact of COVID on education/work

Male



Difficulty in school/work

Female



Difficulty in school/work

Non-Binary



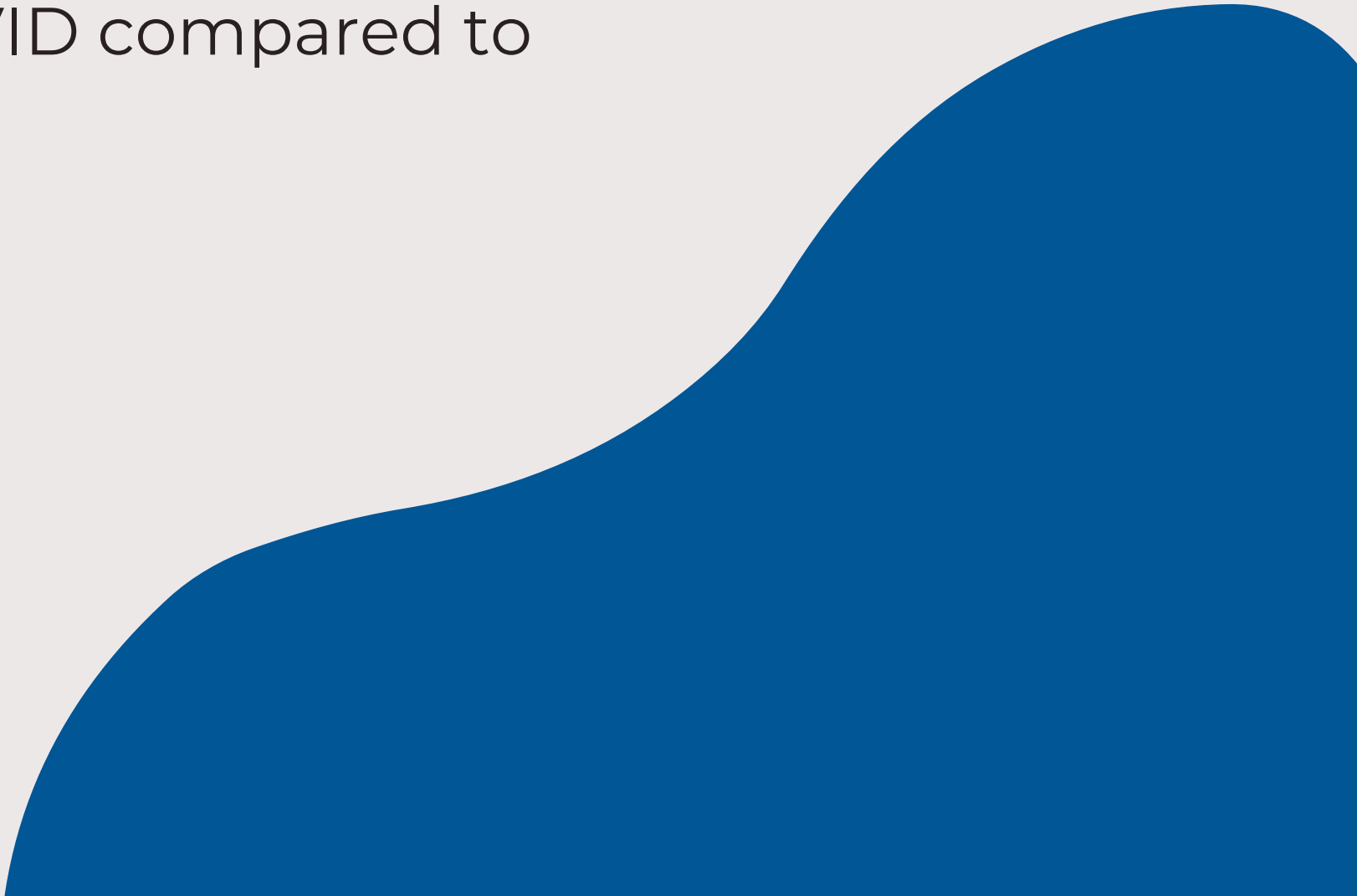
Difficulty in school/work

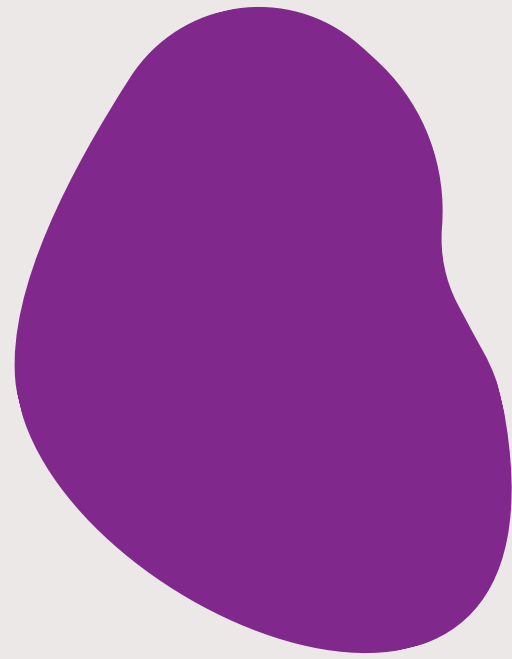
The logo features the text "Zoom Poll" in a bold, white, sans-serif font, centered within a dark blue, irregularly shaped background that resembles a speech bubble or a drop. The background has a rounded top-left corner and a pointed bottom-left corner, with a smooth, wavy right edge.

Zoom Poll



Feedback on these findings?

- Zoom poll results
 - Why would 18-20 year olds have more difficulty keeping up with work / their grades suffering due to COVID compared to 21-25 year olds?
 - Why would non-binary folks be more likely to delay school/training due to COVID compared to males and females?
- 



Impact of COVID on substance use

More than half used these substances more during COVID:



62% smoked cigarettes more than usual



58% vaped more than usual



55% smoke marijuana more than usual

Less than half used these substances more during COVID:

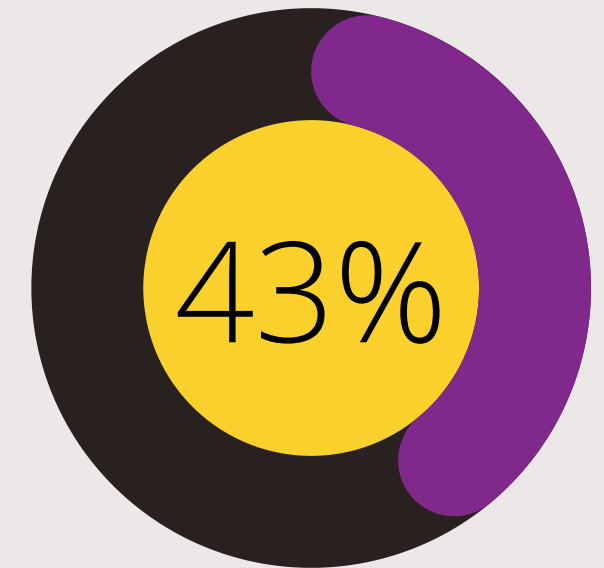
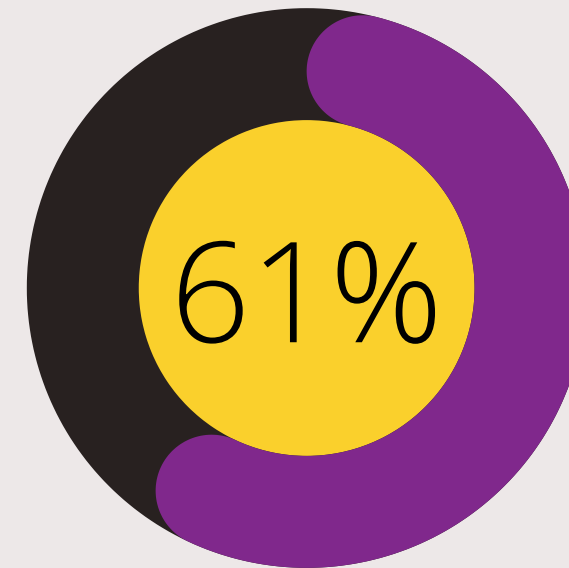
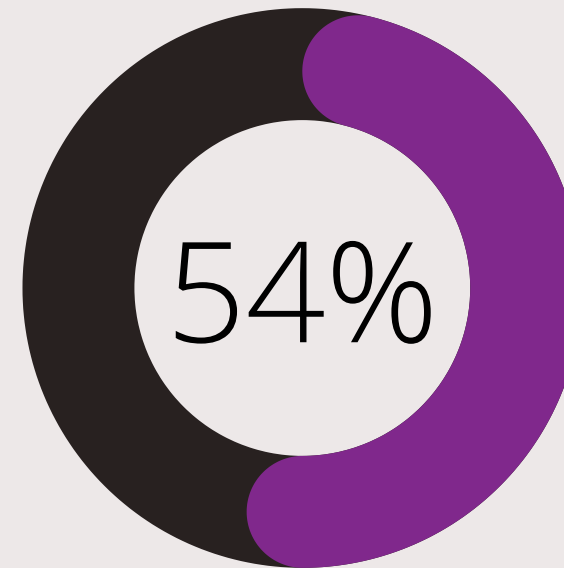
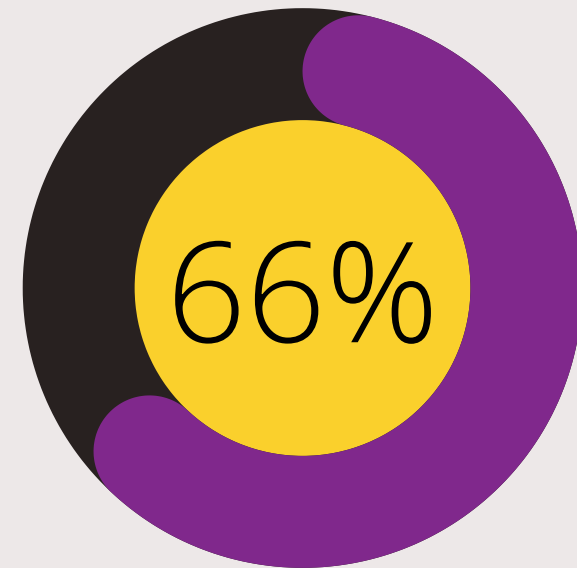


40% drank alcohol more than usual

Substances
used more
during COVID:

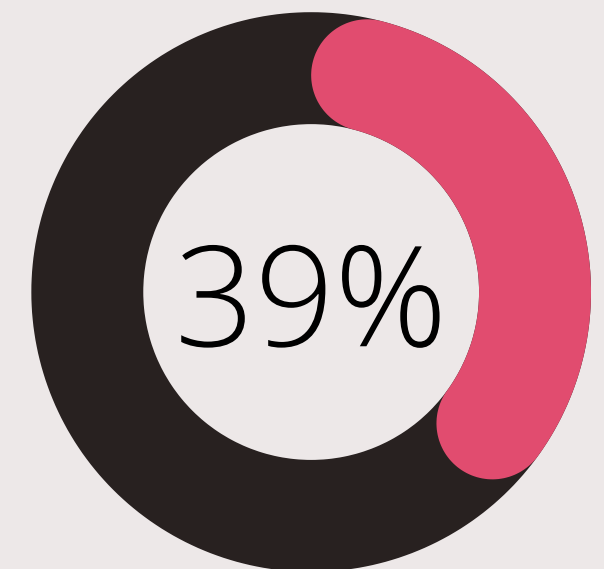
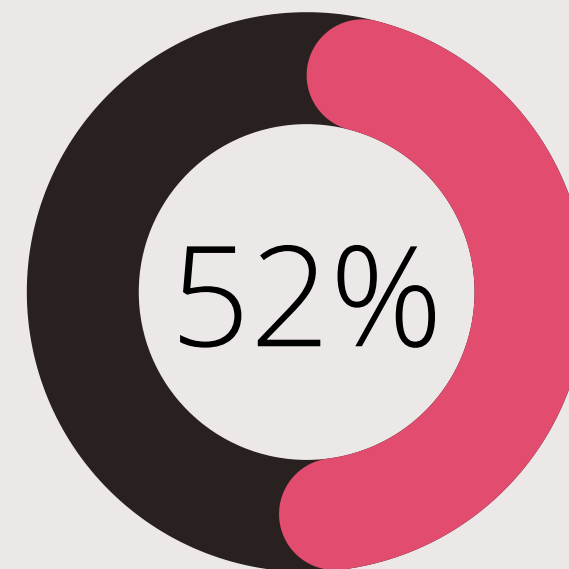
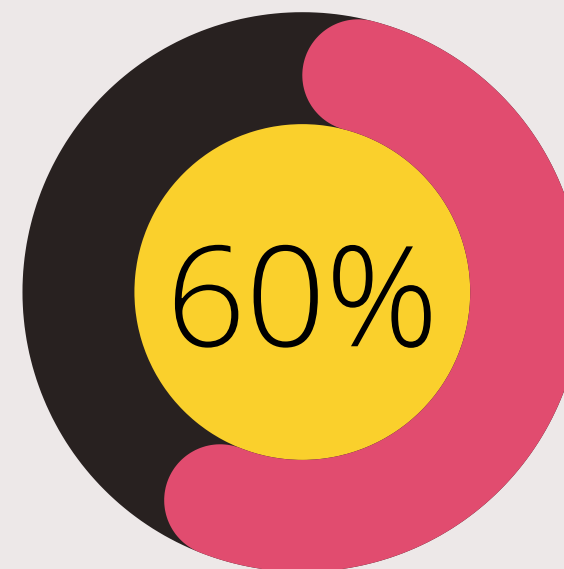
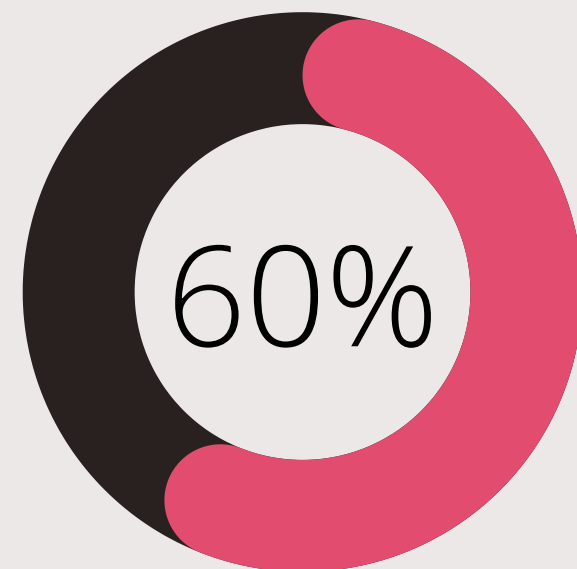


AGES 18 - 20



VS

AGES 21 - 25

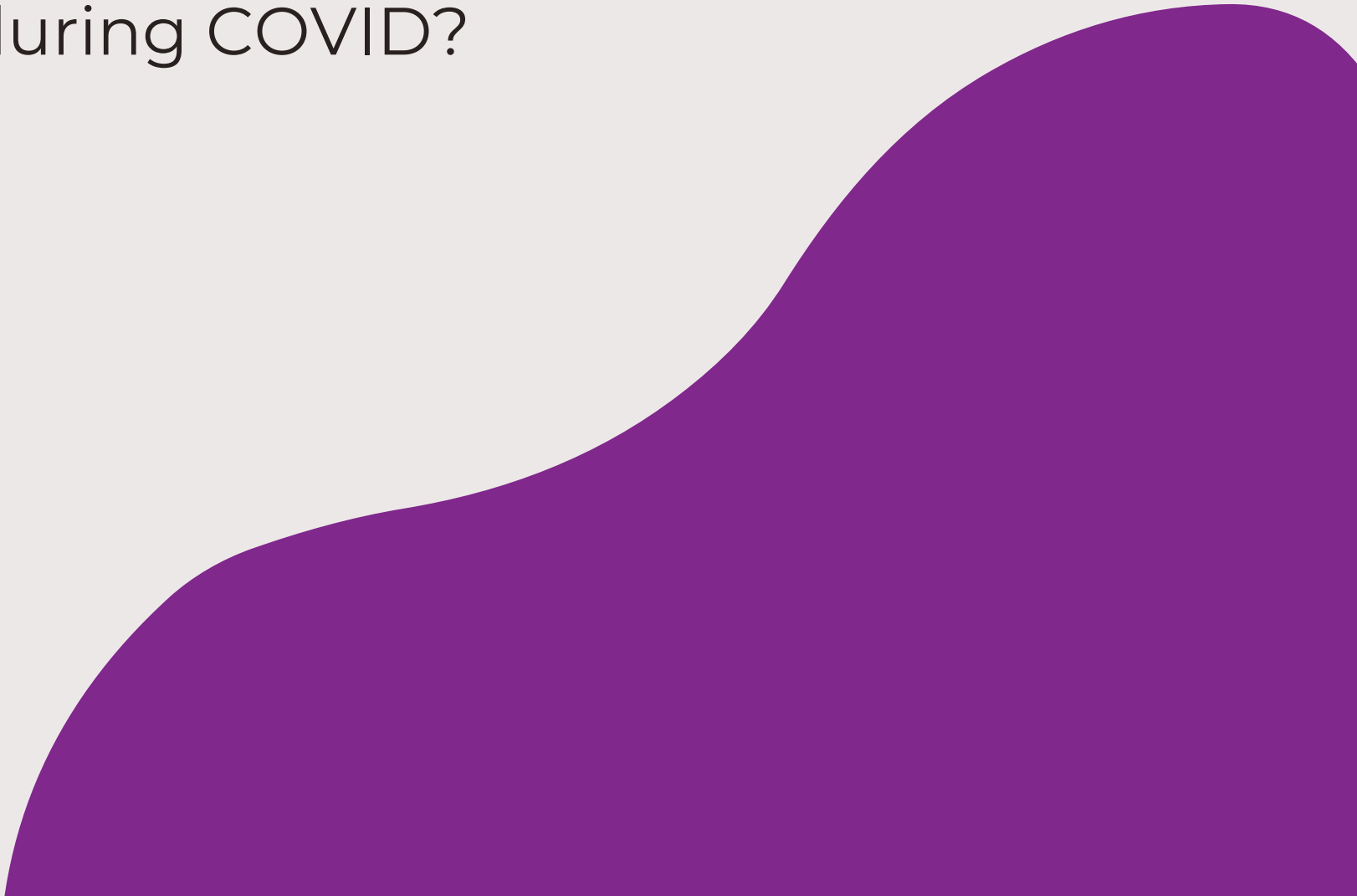




Zoom Poll



Feedback on these findings?

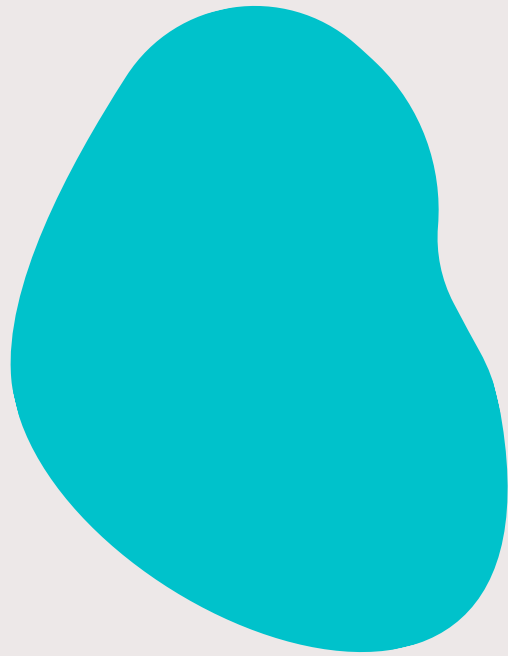
- Zoom poll results
 - Compared to 21-25 year olds, 18-20 year olds increased their substance use (cigarettes, marijuana, alcohol) more during COVID - the only exception was with vaping.
 - What are some reasons as to why 18-20 year olds are increasing substance use more during COVID?
- 



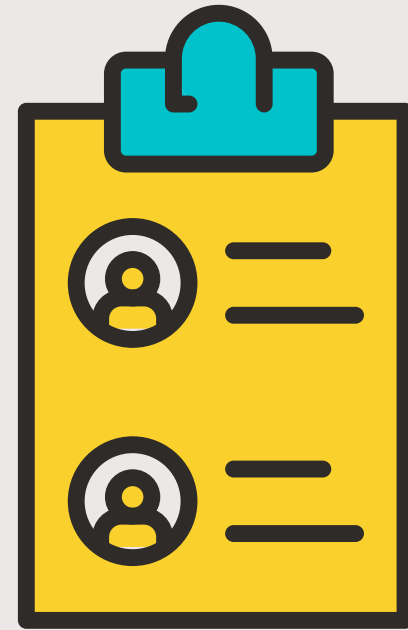
How is COVID impacting you now?

- Survey was created early 2021 - pre vaccine
- Going into this fall, what are the changing struggles that young adults might be facing?

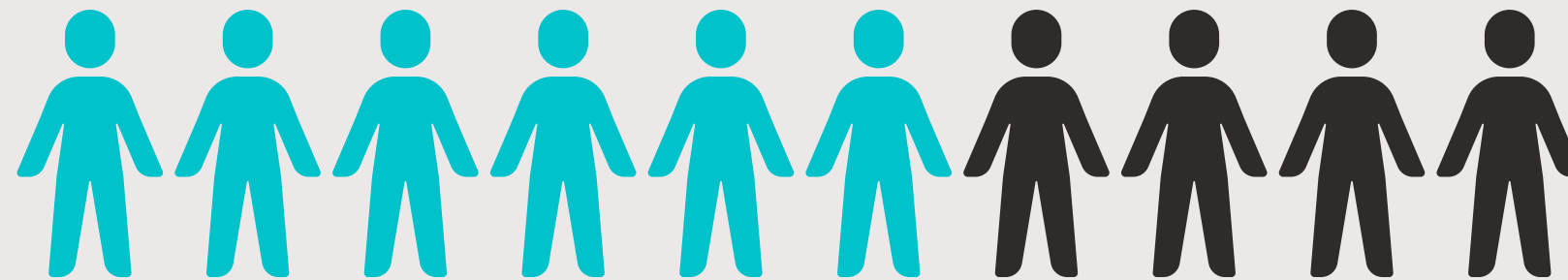




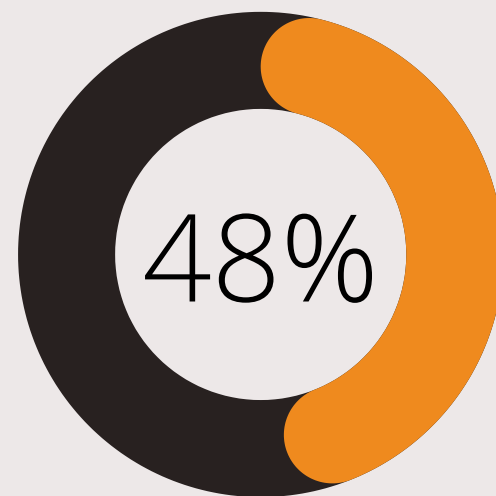
Young adult mental health history



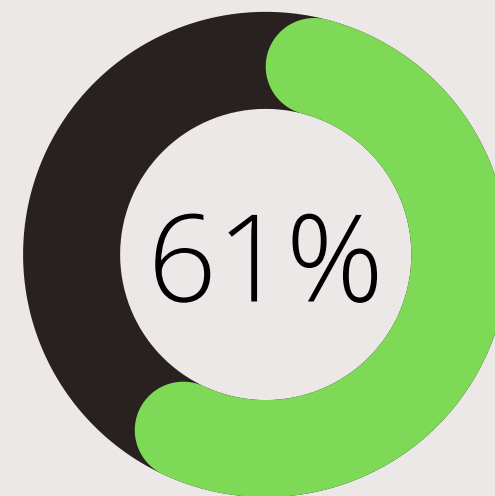
Overall, 59% reported a past mental health diagnosis



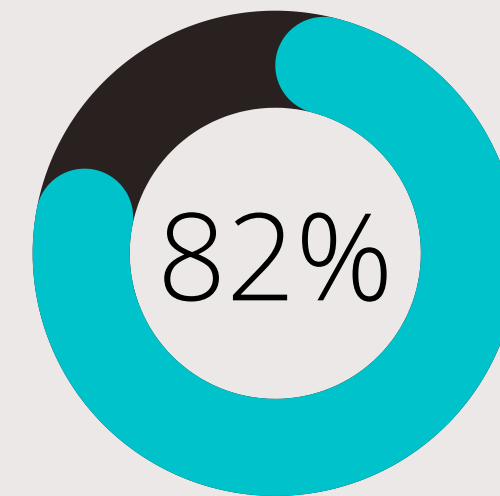
Male



Female

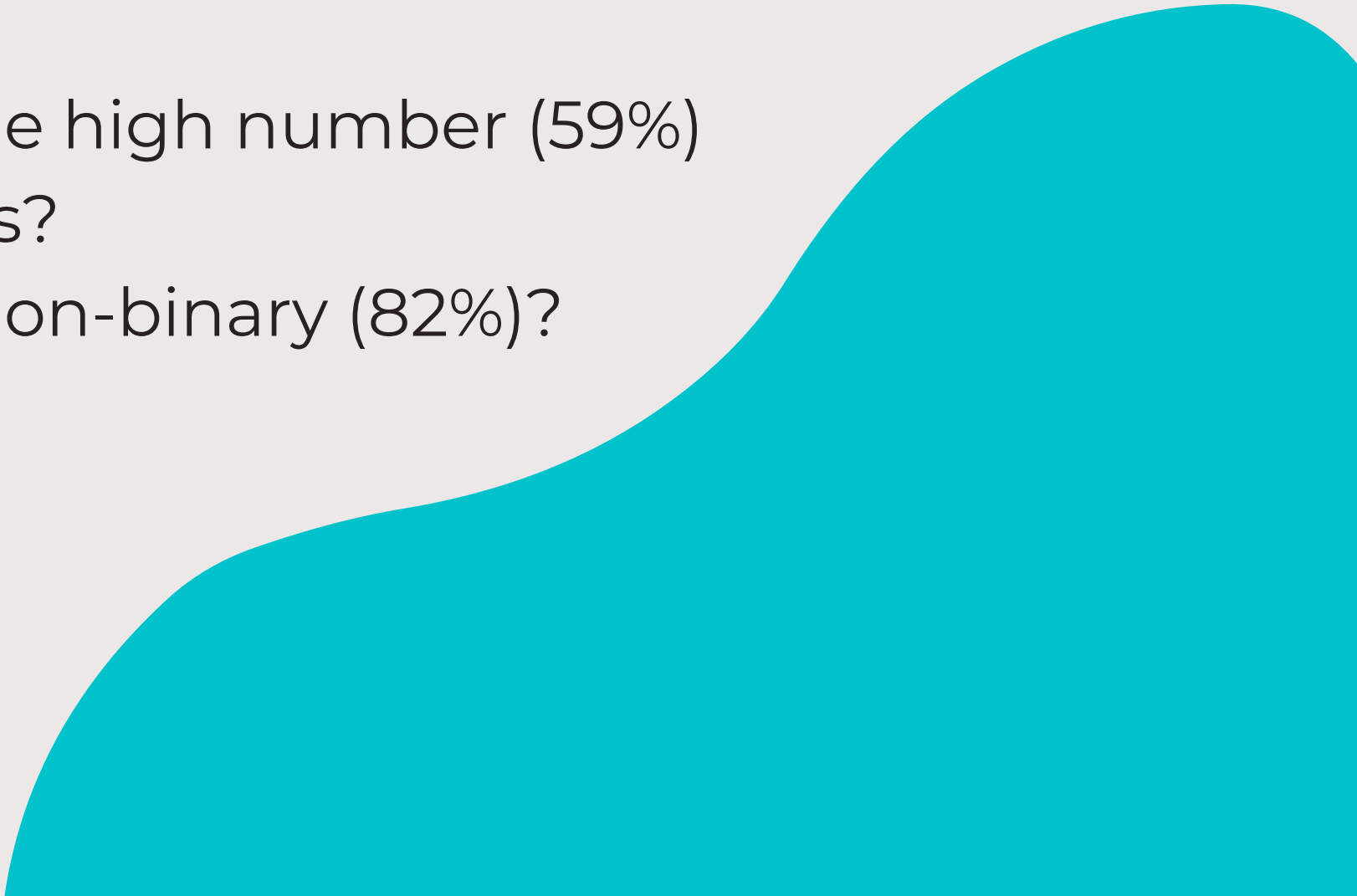


Non-Binary





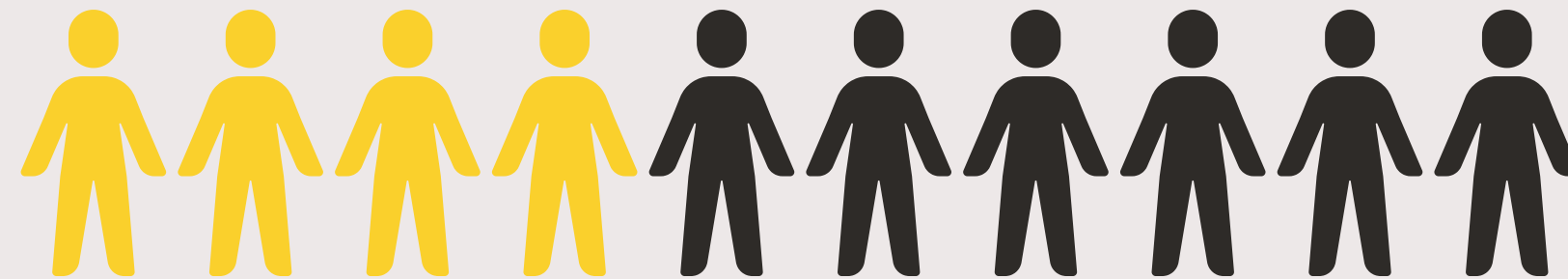
Feedback on these findings?

- Past mental health diagnosis included:
 - Depression or anxiety
 - Personality disorder
 - Attention hyperactivity disorder (ADHD)
 - Post-traumatic stress disorder
 - Or "other" diagnosis
 - In your opinion what is driving the high number (59%) of past diagnoses in young adults?
 - Why is this much higher for non-binary (82%)?
- 



Young adult mental health needs

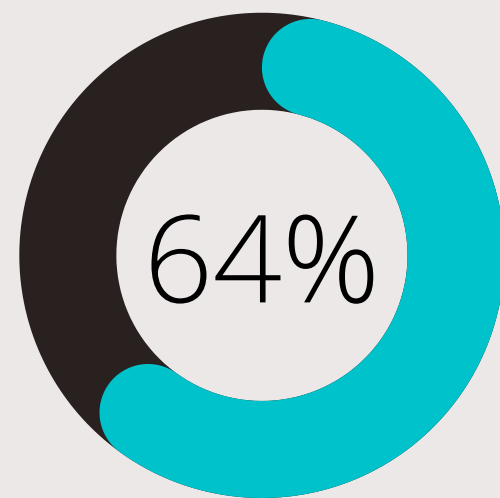
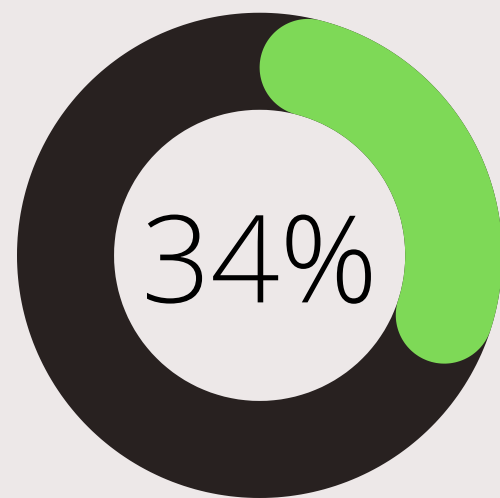
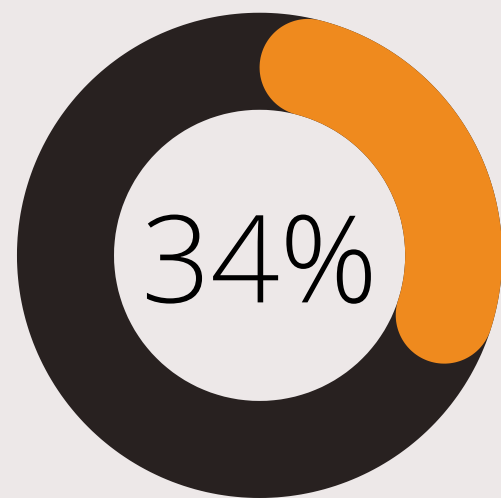
Overall, 38% reported thoughts of suicide this past year



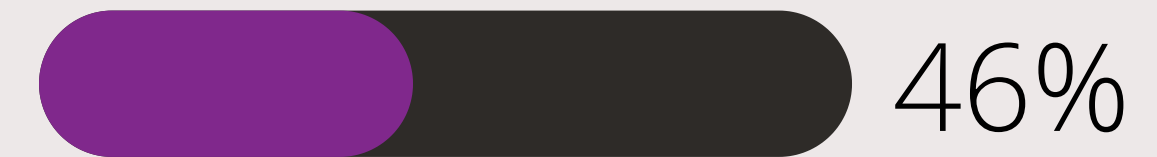
Male

Female

Non-Binary



**AGES
18 - 20**



**AGES
21 - 25**

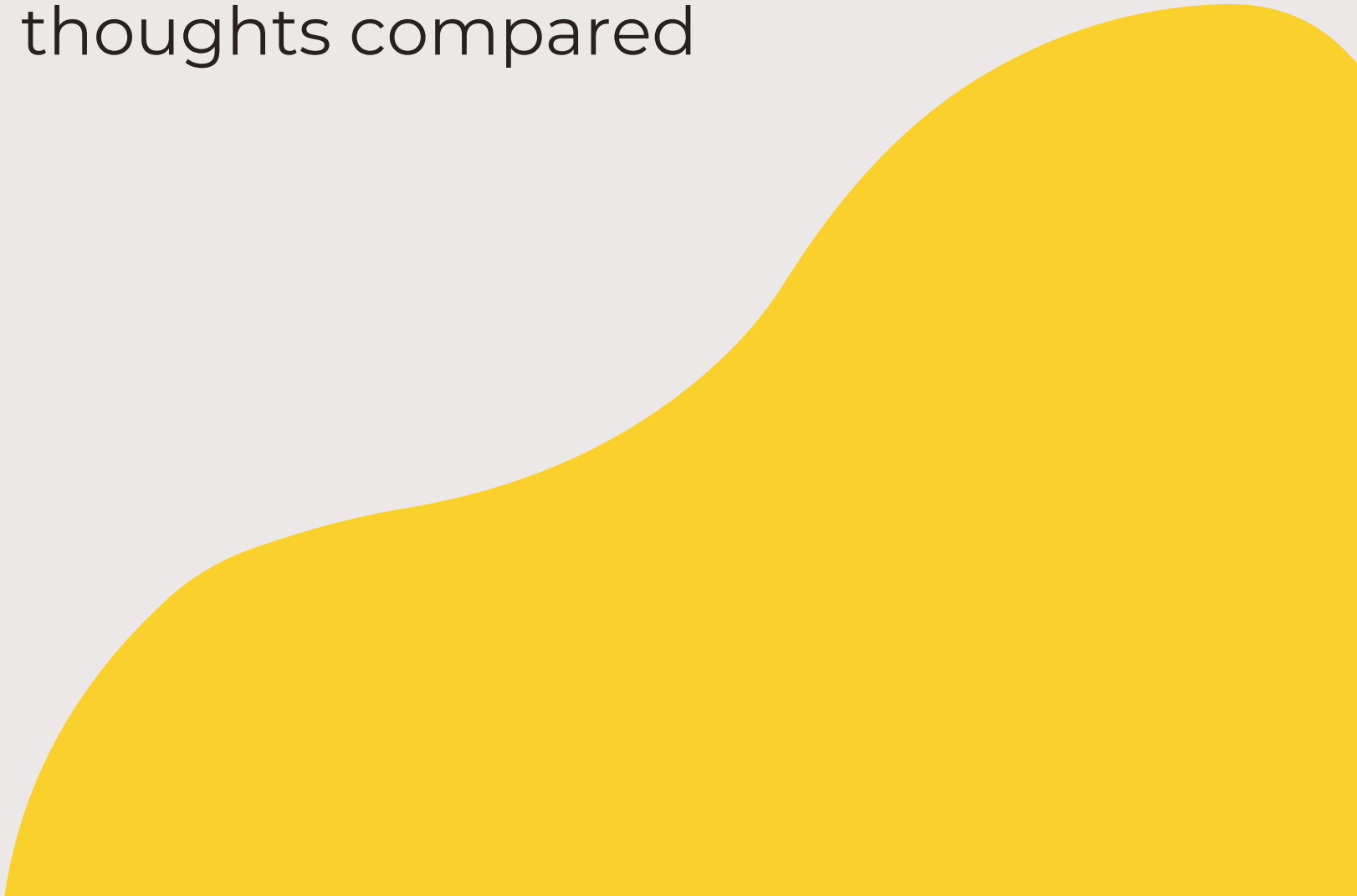


The image features a bright yellow, irregularly shaped graphic that resembles a speech bubble or a drop. Inside this yellow shape, the words "Zoom Poll" are written in a bold, white, sans-serif font. The background of the entire image is a light gray.

Zoom Poll



Feedback on these findings?

- Zoom poll results
 - In your opinion, why are a higher percentage of non-binary individuals struggling with suicidal thoughts compared to male/female individuals?
 - In your opinion, why are a higher percentage of 18-20 year olds struggling with suicidal thoughts compared to 21-25 year olds?
- 



Reactions to the survey results

- What do you think is impacting your health opportunities?
- What should OHA focus on to improve your health possibilities?
- What is the story that isn't being told in these results?





Anything else you want OHA to know?

- What do you wish we had asked?
- What do you wish we knew about you?

